

August 5, 2008

**TO:** ALL JEEP DEALERS

**FROM:** GLOBAL SERVICE

**SUBJECT:** RAPID RESPONSE TRANSMITTAL #08-060  
Front Window Belt Molding Noise, Loose or Sticking

**INVOLVED VEHICLES:**

2008 (WK) Grand Cherokee

**NOTE:** This Service Action affects unsold vehicles only.

**NOTE:** The VIN List is available on DealerCONNECT for all affected dealers. The VIN List has been inserted in the Service Tab under Rapid Response Transmittals. The dealers receiving the Rapid Response Transmittal Service Action are the "Ship To" dealers and the VIN's listed are specific to their dealership. All involved vehicles will be loaded into the VIP system.

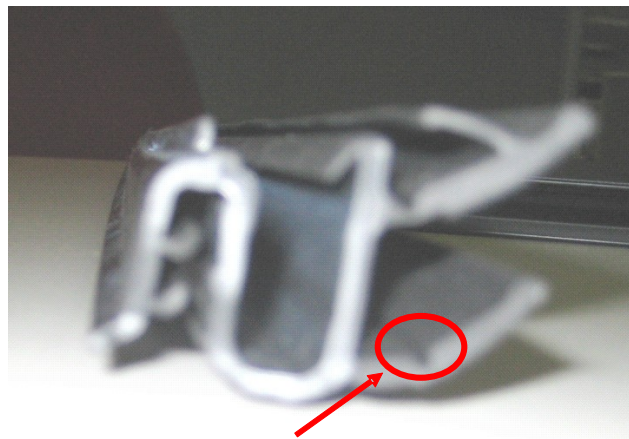
**DISCUSSION:**

A number of vehicles were built with a front door window belt molding that can exhibit a moan sound or may stick and bind or become loose. Dealers are required to modify the belt molding on both doors.

**REPAIR PROCEDURE:**

1. Roll both the front windows down fully.
2. Insert a sharp, slim razor knife into the slot near the lock knob and cut the inner belt molding's lower seal lip by the notch. (Fig 1).

FIGURE 1



Cut inner belt seal lower seal lip by the notch.

3. Cut lower seal lip about 4 to 5 inches along the seam and then remove knife.
4. Using a pair of needle nose pliers, reach in between belt seal and window and pull the lower seal lip out (Fig 2).

FIGURE 2



5. Pull strip in a horizontal motion along frame of window to remove lower seal lip.
6. Repeat procedure on the other side.
7. Cycle windows up and down to verify condition is rectified.

**POLICY:** Reimbursable within the provisions of the warranty.

**NOTE: USE OF THE LABOR OPERATION INCLUDED WITH THIS SERVICE ACTION ON VEHICLES OTHER THAN THOSE INVOLVED MAY BE SUBJECT TO CHARGE BACK.**

**TIME ALLOWANCE:**

**LABOR OPERATION NO:**

23-51-17-90 Inner Belt Molding Remove Lower Lip Seal, Front Doors (B) 0.2 Hrs.

**FAILURE CODE:** ZZ - Service Action

If you have any questions, contact your Business Center.